



Ice Chest

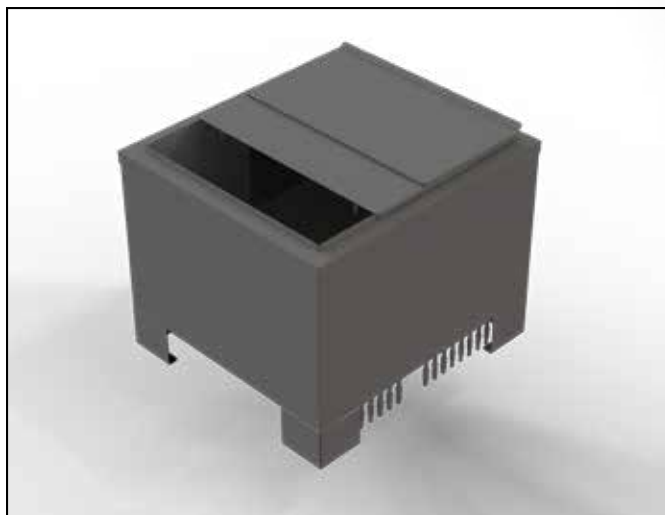
Ice Chest

OVERVIEW

For an efficient and hygienic way to store and dispense ice, rely on this Micrio MaticTaprite ice bin. This ice bin series is made from durable stainless steel to provide long-lasting use in your establishment. It is insulated with polyurethane foam to help keep ice frozen and keep the bin cool.

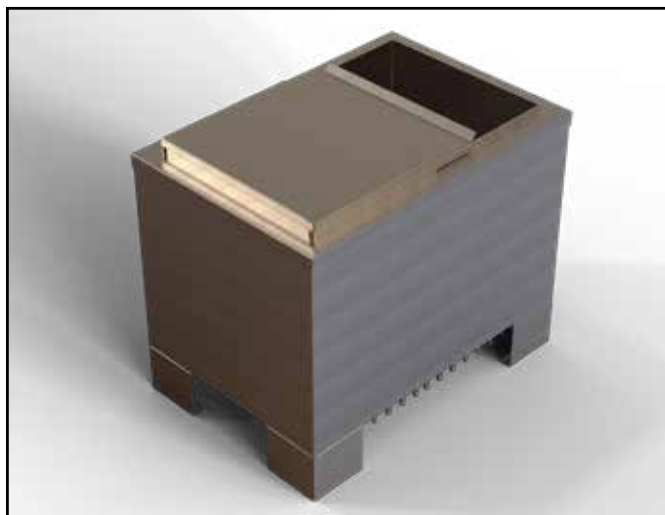
FEATURES

- Free Standing and Drop-In available
- 3/8" to 1/4" stepdown fittings allow for versatility
- Complete with lid
- Foamed in place installation
- Available with sealed cold plate
- All line connections on bottom
- Decorative rims on all Drop-Ins
- NSF approved



1522 (Free Standing Or Drop-In)

- Width: 22" (559mm)
- Depth: 15" (381 mm)
- Height: 14.25" (362 mm)
- Capacity: 60 lbs (27 kg)
- Available with seven (7) circuit pre-mix cold plate or eight (8) circuit post-mix cold plate



2123 (Free Standing Or Drop-In)

- Width: 23" (584 mm)
- Depth: 21" (533 mm)
- Height: 14.25" (362 mm)
- Capacity: 80 lbs (36 kg)
- Available with seven (7) circuit pre-mix cold plate or nine (9) circuit post-mix cold plate